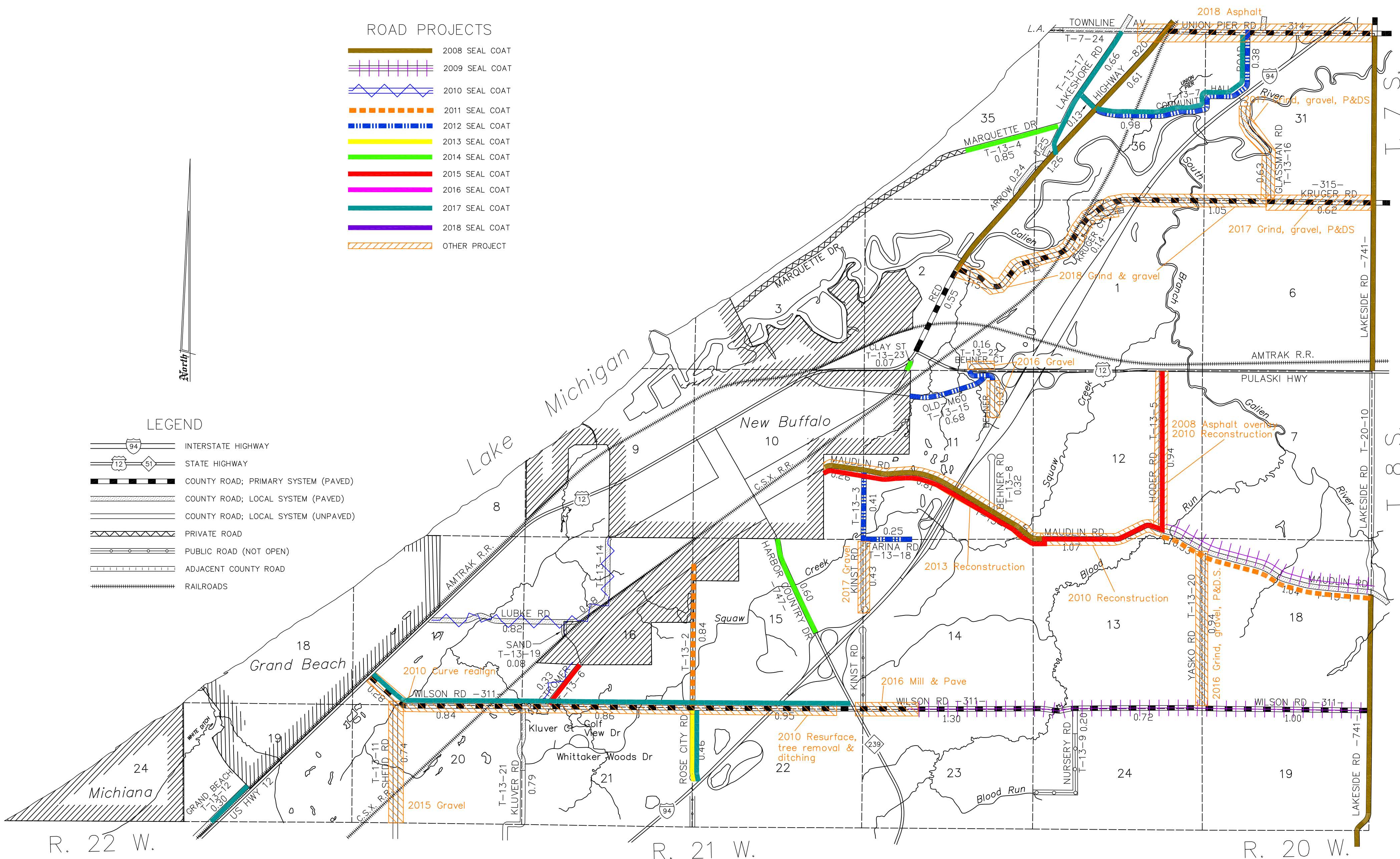


ROAD PROJECTS

- 2008 SEAL COAT
- 2009 SEAL COAT
- 2010 SEAL COAT
- 2011 SEAL COAT
- 2012 SEAL COAT
- 2013 SEAL COAT
- 2014 SEAL COAT
- 2015 SEAL COAT
- 2016 SEAL COAT
- 2017 SEAL COAT
- 2018 SEAL COAT
- OTHER PROJECT

LEGEND

- INTERSTATE HIGHWAY
- STATE HIGHWAY
- COUNTY ROAD; PRIMARY SYSTEM (PAVED)
- COUNTY ROAD; LOCAL SYSTEM (PAVED)
- COUNTY ROAD; LOCAL SYSTEM (UNPAVED)
- PRIVATE ROAD
- PUBLIC ROAD (NOT OPEN)
- ADJACENT COUNTY ROAD
- RAILROADS



NEW BUFFALO TWP.

BERRIEN COUNTY
ROAD DEPARTMENT
BENTON HARBOR, MICHIGAN

BRIAN Q. BERNDT, COUNTY HWY ENGINEER

SCALE: 1"=2000' DATE: October, 2018

No. 13

PRIMARY ROAD SYSTEM IS 11.66 MILES
LOCAL ROAD SYSTEM IS 17.58 MILES