



Berrien County Road Department

2860 E. Napier Avenue
Benton Harbor, MI 49022

Phone: 269-925-1196
Fax: 269-925-8098
www.bcroad.org

FOR IMMEDIATE RELEASE

MONDAY, AUGUST 8th, 2022

CONTACT: Adri Boone – Berrien County Road Department Administrative Assistant
aboone@bcroad.org – 269-925-1196 ext. 4410

COMMUNITY HALL INTERMITTENT CLOSURE CONTINUES

TOWNSHIP: New Buffalo Township

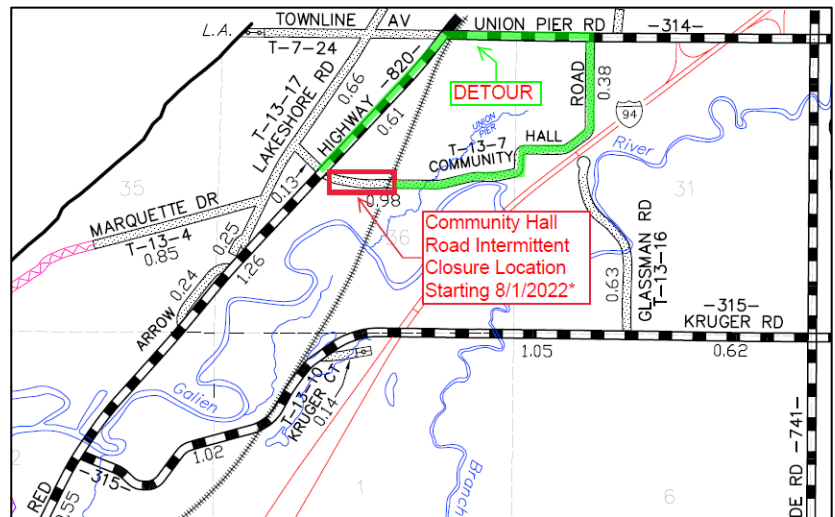
LOCATION: Community Hall Road between Red Arrow Highway and the CSX Railroad Tracks

CLOSEST CITIES: Sawyer, New Buffalo

START DATE: Week of 8/1/2022

ESTIMATED END DATE: TBD

PROJECT: Utility started the week of 8/1/2022 and will continue this week. Community Hall Road will be closed to thru traffic, when necessary, for utility related work. Please watch and follow closure signs when in place. Work is weather permitting. Road closure is anticipated to primarily be in place during daytime hours.



Traffic Restrictions: Community Hall Road will be closed to thru traffic, at times, between Red Arrow Highway and the railroad tracks. Closure anticipated to take place during daytime, with reopening overnight. Closure is subject to work progression to be reopened. Follow posted signs.

DETOUR: Red Arrow Highway to Union Pier Road to Community Hall Road.

###