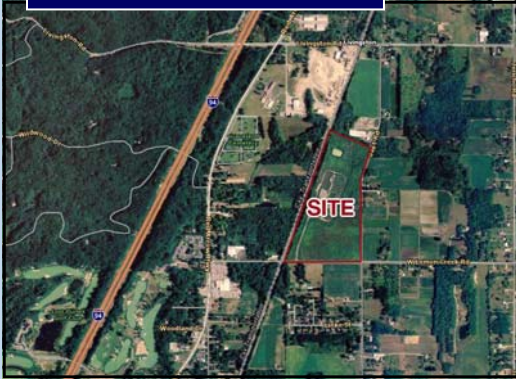


# INDUSTRIAL

Sale: \$1,500,000



- Lot Size: 49.45 Acres
- Zoned Industrial
- All Utilities to Site
- Railroad Spur
- Flat Terrain
- Central Location

## Lemon Creek Road - Parcel A

Bridgman, MI 49106  
(Lake Charter Township)

Excellent Industrial site now available in Bridgman. Property is located just off I-94 and Red Arrow Highway. Benefits include municipal utilities, flat terrain, and a railroad spur directly to site. Centrally located with easy access to major highways and transportation arteries. Possibilities are endless!

### Site Contact Information:

Grubb & Ellis / Cressy & Everett  
2241 U.S. 12 East  
Edwardsburg, MI 49112  
Phone: (269) 699-5502

Jim Ringler  
Cell Phone: (574) 298-8980  
E-mail: [jimringler@cressyandeverett.com](mailto:jimringler@cressyandeverett.com)  
[www.cressyandeverett.com](http://www.cressyandeverett.com)



Berrien County Community Development  
Jennifer Arent  
701 Main Street  
St. Joseph, MI 49085

Phone: (269) 983-7111 x8788  
Fax: (269) 982-8611  
E-mail: [jarent@berriencounty.org](mailto:jarent@berriencounty.org)  
Website: [www.berriencounty.org](http://www.berriencounty.org)

Every effort has been made to ensure the accuracy of this information. However, as data is constantly changing, Berrien County will be held harmless for any omissions or errors contained herein.