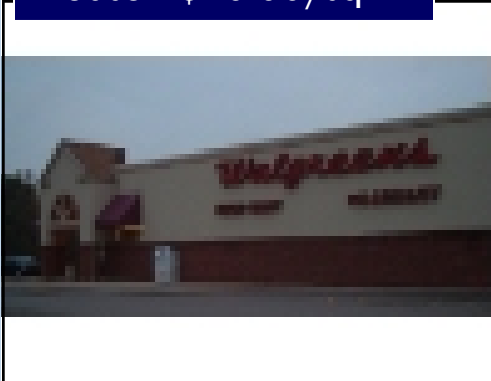


# RETAIL

Lease: \$10.00/sq ft



- Building Size: 13,568 sq ft
- Year Built: 1993
- 2 Pylon Signs

## Former Walgreens

1595 Pipestone Road  
Benton Harbor, MI 49022  
(Benton Charter Township)

Freestanding Walgreens sublease, located on the corner of Pipestone and Napier in Benton Harbor. Good lease term available. Two pylon signs available. 200' frontage on Pipestone Road. Located within 1 mile of I-94, M-139 and the US-31 Bypass.

### Site Contact Information:

Grubb & Ellis / Cressy & Everett  
3930 Edison Lakes Parkway, Suite 200  
Mishawaka, IN 46545  
[www.CressyAndEverett.com](http://www.CressyAndEverett.com)

Christian Davey  
E-mail: [christiandavey@cressyandeverett.com](mailto:christiandavey@cressyandeverett.com)  
Phone: (574) 271-4060 ext. 34



Berrien County Community Development  
Jennifer Arent  
701 Main Street  
St. Joseph, MI 49085

Phone: (269) 983-7111 x8788  
Fax: (269) 982-8611  
E-mail: [jarent@berriencounty.org](mailto:jarent@berriencounty.org)  
Website: [www.berriencounty.org](http://www.berriencounty.org)